

20.9944.SA

**Robiq 250-10**

The Robiq is a New Zealand staple for those wanting a functional and durable sink insert for your kitchen.

With New Zealand families in mind, Heritage stainless steel sinks are designed to withstand the demands of everyday use. Made from the highest grade stainless steel, comprised of 18% chromium and 10% nickel, they deliver durability, strength and quality.

15 litres per minute rated high-capacity overflow kit included.

Download information on Archants' high-capacity overflow system [here](#)

**Learn more about Robiq**

**Specification Notes**

In the box;

High capacity basket waste & overflow kit - 5901

Basket waste strainer 5951

Flange: 20mm

Why Robiq sinks?

1. Easy clean radius
2. High Capacity Overflow
3. Handmade quality
4. 30 year limited warranty
5. Superior sheen finish
6. 1.2mm thick stainless steel
7. Generous bowl depth
8. 18/10 Stainless Steel grade

**Included Accessories**

**Basketwaste and  
Overflow Kit, Large 202l**

20.6901.ZZ



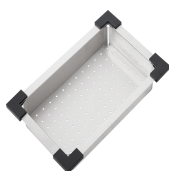
**Basketwaste and  
Overflow Kit, Large 202l**

20.6901.ZZ

**Suggested Accessories**

**Hot Mat, Stainless Steel**

20.9689.SA



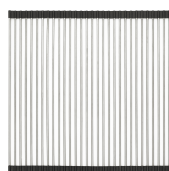
**Colander, Stainless Steel**

20.9647.SA



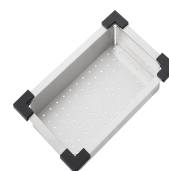
**Autosol 3in1 for Stainless  
Steel Cleaner 250ML**

20.9574.ZZ



**Hot Mat, Stainless Steel**

20.9689.SA



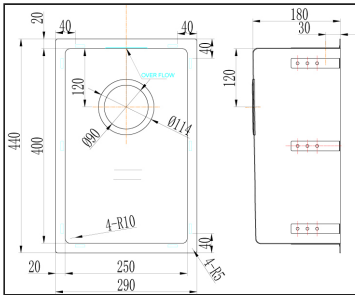
**Colander, Stainless Steel**

20.9647.SA

**Specifications**

Sink Design	Single Bowl	Sink Overall Height (mm)	440	Sink Bowl Length 2 (mm)	
Sink Mounting	Flushmount    Overmount Undermount    Welded	Sink Thickness (mm)	1.2	Sink Bowl Width 2 (mm)	
Sink Material	Stainless Steel	Sink Cabinet Size (mm)	350	Sink Bowl Depth 2 (mm)	
Sink Overflow Rating	15lt/minute	Sink Cut Out Length (mm)	400	Sink Bowl Radius (mm)	10
Suits waste disposal	Yes	Sink Cut Out Width (mm)	250	Sink Flange (mm)	20
Sink Warranty	30	Sink Bowl Length (mm)	250	Sink Material Grade	18/10.304 Stainless Steel
Sink Overall Length (mm)	290	Sink Bowl Width (mm)	400	Family	Robiq
Sink Overall Width (mm)	440	Sink Bowl Depth (mm)	180		

Product Details



Sink Earthing Instruction

To maintain a long-lasting beauty and shine in your sink, and prevent any marking or staining, please ensure you equipotentially bond (earth) this sink.

To prevent surface corrosion please ensure all water piped are flushed first to clear any particles. For further information, please call 0800 ARCHANT (0800 272 4268)