



20.7460.SA  
**Franke Bolero BOX 210-68**

Franke Bolero BOX 210-68

The largest single-bowl sink in the Bolero range, the BOX 210-68 measures a huge 680mm x 410mm with a depth of 200mm. Requiring a cabinet size of 800mm, this sink is designed to be the feature item in any kitchen and it can be both overmounted or undermounted. It copes effortlessly with even the biggest pile of washing up – tall or wide pots and pans are no match for the size of this sink.

Included Accessories



**Franke Overflow and Basketwaste Kit with Badge**

20.5550.ZX



**Franke standard waste strainer (WP669)**

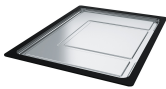
20.5567.ZZ



**Franke Overflow Badge**

20.5548.ZZ

Suggested Accessories



**Franke Extension Drainer (Suits Bolero) DT36O**

20.7500.ZX



**Franke Roller Mat (Suits Bolero, Centinox, Rambla) RM44**

20.7502.ZX



**Franke Drainer Basket (Suits Bolero, Centinox, Vela) DB664**

20.7504.ZX



**Franke Strainer Bowl (Suits Bolero, Centinox) SB452**

20.7505.ZX



**Franke Chopping board (Suits Bolero) CB964**

20.7506.ZX



**Franke Chopping Board (Suits Bolero) CB93I**

20.7507.ZX



**Franke Waste Disposal with Air Switch TE-75**

20.7523.ZX

Specifications

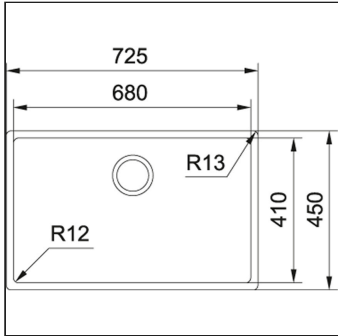
Sink Design	Single Bowl
Sink Mounting	Flushmount    Overmount Undermount
Sink Material	Stainless Steel
Sink Overflow Rating	12lt/minute
Suits waste disposal	Yes
Sink Warranty	50

Sink Overall Height (mm)	200
Sink Thickness (mm)	1.2
Sink Cabinet Size (mm)	800
Sink Cut Out Length (mm)	680
Sink Cut Out Width (mm)	410
Sink Bowl Length (mm)	680

Sink Bowl Length 2 (mm)	
Sink Bowl Width 2 (mm)	
Sink Bowl Depth 2 (mm)	
Sink Bowl Radius (mm)	12
Sink Flange (mm)	20
Sink Material Grade	18/10.304 Stainless Steel

Sink Overall Length (mm)	725	Sink Bowl Width (mm)	410	Family	Bolero
Sink Overall Width (mm)	450	Sink Bowl Depth (mm)	200		

Product Details



Sink Earthing Instruction

To maintain a long-lasting beauty and shine in your sink, and prevent any marking or staining, please ensure you equipotentially bond (earth) this sink.

To prevent surface corrosion please ensure all water piped are flushed first to clear any particles. For further information, please call 0800 ARCHANT (0800 272 4268)