

20.8633.SA
Nebraska 1220-20, Satin

Meticulously designed with New Zealand families in mind, these stainless steel sinks are the epitome of resilience, ready to endure the rigors of daily use in your busy household. Crafted from the highest-grade stainless steel, featuring an 18% chromium and 10% nickel composition, they offer not only unparalleled durability but also exceptional strength and quality. With the Nebraska sink, you can trust that it's built to last, making it the ideal choice for the demands of everyday life in your kitchen. Elevate your kitchen with the Nebraska and experience the perfect marriage of style and endurance, tailored for New Zealand homes. Upgrade your kitchen today and discover the difference in quality that Archant brings to your family's daily life.

Specification Notes

*Check measurements before installation.

- In the box;
Basket waste and overflow kit - 20.8649.SA
Basket waste w/o Overflow, 2021 - 20.9855.SA
L-Shape Pipe - 20.9853.SA
Basket Strainer - 20.9856.SA
Sink mounting clips - 20.9420.ZZ
Sound Deadening Pad for Sink - 20.9415.ZZ
Overflow T - 20.9859.ZZ
Archant Overflow Badge - 20.9857.ZZ



Included Accessories



Basketwaste and Designer Overflow, suits badge type overflow

20.9427.ZZ



Basketwaste Strainer, Suits badge type overflow (9427)

20.8653.SA



HH Waste Cover Badge for small O/F Kingston Sinks (small)

20.9771.ZZ



Basketwaste and Overflow Kit, Large 2021

20.6901.ZZ

Suggested Accessories



Tray, SS Perforated, 365 x 425 O.D

20.9236.SA



Basket, 320 x 380, Stainless Steel

20.9550.SS



Chopping Board, 35l x 4lOmm

20.9566.WO



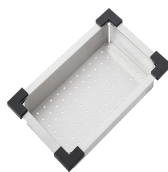
Autosol 3inl for Stainless Steel Cleaner 250ML

20.9574.ZZ



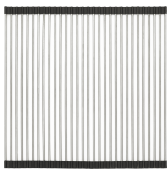
Spazio plumbing Kit Double

20.9603.ZZ



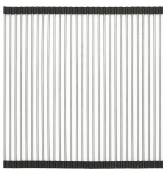
Colander, Stainless Steel

20.9647.SA



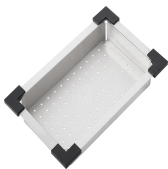
Hot Mat, Stainless Steel

20.9689.SA



Hot Mat, Stainless Steel

20.9689.SA



Colander, Stainless Steel

20.9647.SA



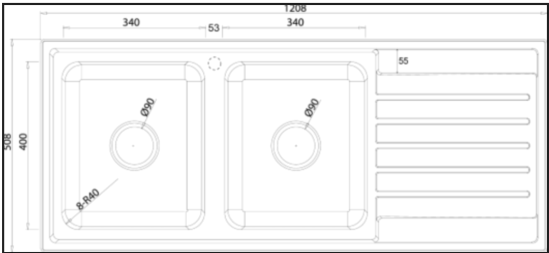
Chopping Board, 35l x 4lOmm

20.9566.WO

Specifications

Sink Design	Double Bowl with Drainer	Sink Overall Height (mm)	195	Sink Bowl Length 2 (mm)	340
Sink Mounting	Overmount Undermount	Sink Thickness (mm)	0.8	Sink Bowl Width 2 (mm)	400
Sink Material	Stainless Steel	Sink Cabinet Size (mm)	800	Sink Bowl Depth 2 (mm)	190
Sink Overflow Rating	8lt/minute	Sink Cut Out Length (mm)	1,178	Sink Bowl Radius (mm)	40
Suits waste disposal	Yes	Sink Cut Out Width (mm)	478	Sink Flange (mm)	15
Sink Warranty	30	Sink Bowl Length (mm)	340	Sink Material Grade	18/10.304 Stainless Steel
Sink Overall Length (mm)	1,208	Sink Bowl Width (mm)	400	Family	Nebraska
Sink Overall Width (mm)	508	Sink Bowl Depth (mm)	190		

Product Details



Sink Earthing Instruction

To maintain a long-lasting beauty and shine in your sink, and prevent any marking or staining, please ensure you equipotentially bond (earth) this sink.

To prevent surface corrosion please ensure all water piped are flushed first to clear any particles. For further information, please call 0800 ARCHANT (0800 272 4268)