

Robiq* 500-10, Satin

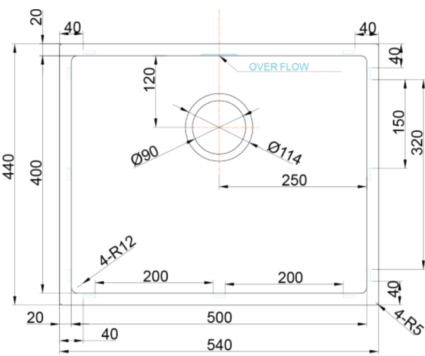


Code 20.9943.SA

Product Overview

Overall sink size:	540mm x 440mm	
Bowl dimension:	400mm x 500mm	
Bowl radius:	10mm	
Reversible:	No	
Cut out size:	400mm x 500mm	
Min cabinet size:	600mm	
Installation:	Flushmount, Overmount, Undermount, Welded	
Material:	Stainless Steel	
Material Grade:	18/10.304 Stainless Steel	
Display Locations:	Auckland Showroom, Wellington Showroom, Christchurch Showroom	

Installation measurements



Production information

Code:	9199 CH
Tap Pressure:	Mains Pressure
WELS rating:	3 Star
Warranty:	5 years
Tap swivel spout:	360°
Cartridge:	Ceramic-Disc Cartridge
Assembled:	New Zealand
Material:	Brass

WELS rating



Included accessories



Includes -
20.9857.ZZ
Archant Overflow
Badge -
20.9859.ZZ
Overflow T-Piece -
20.9852.ZZ L-
shape pipe -
20.8649.SA
Basketwaste w
Overflow Hole
-20.9856.SA
Strainer



Includes -
20.9857.ZZ
Archant Overflow
Badge -
20.9859.ZZ
Overflow T-Piece -
20.9852.ZZ L-
shape pipe -
20.8649.SA
Basketwaste w
Overflow Hole
-20.9856.SA
Strainer

Suggested accessories



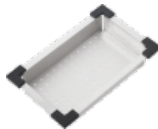
Robiq* Drainer Tray,
395 x 425mm



Hot Mat, Stainless
Steel



Chopping Board,
500mm



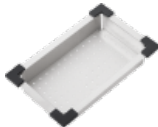
Colander,
Stainless Steel



Autosol 3in1 for
Stainless Steel
Cleaner 250ML



Hot Mat, Stainless
Steel



Colander, Stainless
Steel