

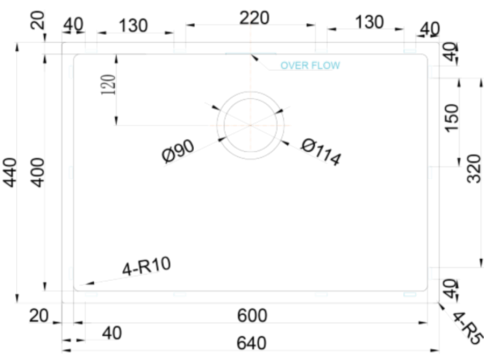


Code 20.9066.SA

Product Overview

Overall sink size:	440mm x 640mm
Bowl dimension:	400mm x 600mm
Bowl radius:	10mm
Reversible:	No
Cut out size:	400mm x 600mm
Min cabinet size:	650mm
Installation:	Overmount, Undermount, Welded
Material:	Stainless Steel
Material Grade:	18/10.304 Stainless Steel

Installation measurements



Production information

Code:	9199 CH
Tap Pressure:	Mains Pressure
WELS rating:	3 Star
Warranty:	5 years
Tap swivel spout:	360°
Cartridge:	Ceramic-Disc Cartridge
Assembled:	New Zealand
Material:	Brass

WELS rating



Included accessories

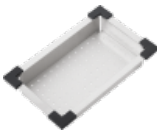


Includes - 20.9857.ZZ Archant Overflow Badge - 20.9859.ZZ Overflow T-Piece - 20.9852.ZZ L-shape pipe - 20.8649.SA Basketwaste w Overflow Hole -20.9856.SA Strainer

Suggested accessories



Hot Mat, Stainless Steel



Colander, Stainless Steel



Chopping Board, 351 x 410mm



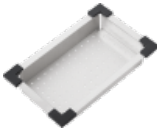
Autosol 3in1 for Stainless Steel Cleaner 250ML



Robiq* Drainer Tray, 395 x 425mm



Hot Mat, Stainless Steel



Colander, Stainless Steel