

Romano 460-10, Satin

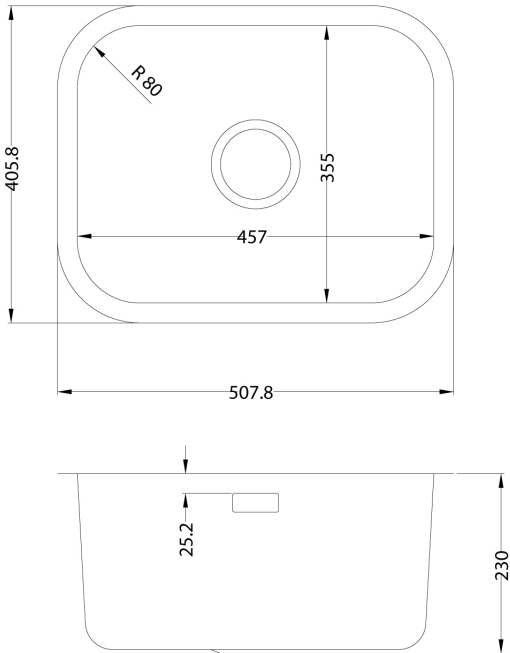


Code 20.9251.SA

Product Overview

Overall sink size:	507.8mm x 405.8mm
Bowl dimension:	457mm x 355mm
Bowl radius:	80mm
Reversible:	Yes
Min cabinet size:	550mm
Installation:	Overmount, Undermount
Material:	Stainless Steel
Material Grade:	18/10.304 Stainless Steel

Installation measurements



Included accessories

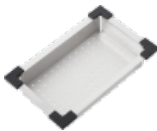


Basketwaste & Rect. Overflow Kit, 15 L/min Rating (HCO)

Suggested accessories



Hot Mat, Stainless Steel



Colander, Stainless Steel



Chopping Board, 351 x 410mm