

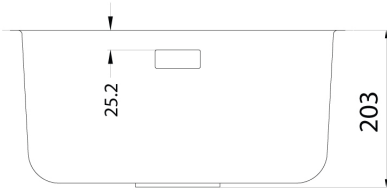
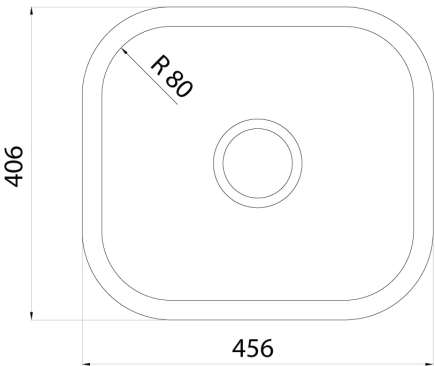


Code 20.9250.SA

Product Overview

Overall sink size:	457mm x 406mm
Bowl dimension:	406mm x 356mm
Bowl radius:	80mm
Reversible:	No
Min cabinet size:	500mm
Installation:	Overmount, Undermount
Material:	Stainless Steel
Material Grade:	18/10.304 Stainless Steel

Installation measurements



Included accessories

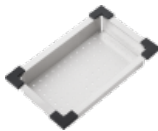


Basketwaste & Rect. Overflow Kit, 15 L/
min Rating (HCO)

Suggested accessories



Hot Mat, Stainless Steel



Colander, Stainless Steel



Chopping Board, 351 x 410mm