

Nebraska 800-10, Satin

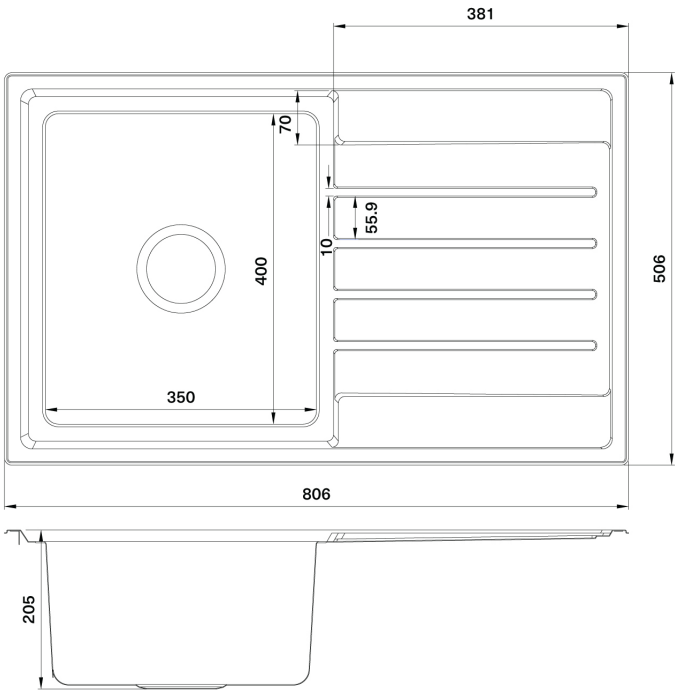


Code 20.8631.SA

Product Overview

Overall sink size:	806mm x 506mm
Bowl dimension:	340mm x 400mm
Bowl radius:	25mm
Reversible:	Yes
Cut out size:	776mm x 476mm
Min cabinet size:	450mm
Installation:	Overmount, Undermount
Material:	Stainless Steel
Material Grade:	18/10.304 Stainless Steel

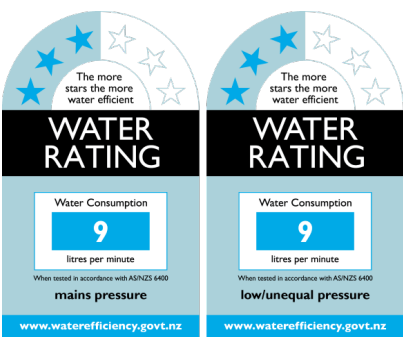
Installation measurements



Production information

Code:	9202 CH
Tap Pressure:	All pressures
WELS rating:	3 Star
Warranty:	5 years
Tap swivel spout:	360°
Cartridge:	Ceramic-Disc Cartridge
Assembled:	New Zealand
Material:	Brass

WELS rating



Included accessories

Suggested accessories



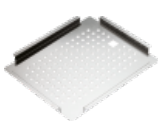
No Image



No Image



Chopping Board,
351 x 410mm



Tray, SS Perforated,
365 x 425 O.D



Basket, 320 x 380,
Stainless Steel



Autosol 3in1 for
Stainless Steel
Cleaner 250ML



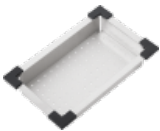
Spazio plumbing
Kit Single



No Image



High Capacity
Overflow Badge,
79x20mm, 2021
Archant



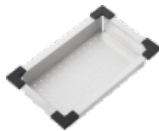
Colander,
Stainless Steel



Hot Mat, Stainless
Steel



Hot Mat, Stainless
Steel



Colander,
Stainless Steel



Chopping Board,
351 x 410mm

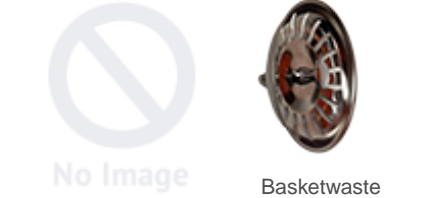


High Capacity
Overflow T-Piece,
2021



No Image

L-Shape Pipe,
Long, 184x145mm,
2021



No Image



Basketwaste, w
Overflow hole,
2021

Basketwaste
Strainer, 2021



Includes -
20.9857.ZZ
Archant Overflow
Badge -
20.9859.ZZ
Overflow T-Piece -
20.9852.ZZ L-
shape pipe -
20.8649.SA
Basketwaste w
Overflow Hole
-20.9856.SA
Strainer