

Robiq 340/300-20 RH, Satin

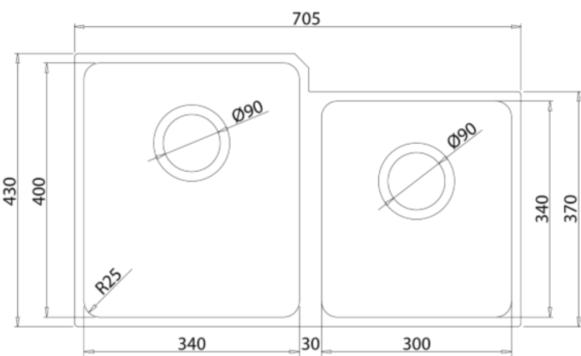


Code 20.9661.SA

Product Overview

Overall sink size:	705mm x 430mm
Bowl dimension:	340mm x 400mm, 300mm x 340mm
Bowl depth:	/180mm
Bowl radius:	25mm
Reversible:	No
Cut out size:	679mm x 404mm
Min cabinet size:	750mm
Installation:	Overmount, Undermount, Welded
Material:	Stainless Steel
Material Grade:	18/10.304 Stainless Steel

Installation measurements



Cape

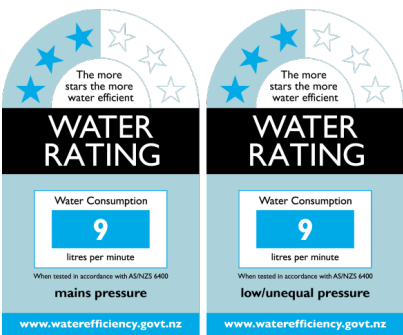
Tap Match



Production information

Code:	9202 CH
Tap Pressure:	All pressures
WELS rating:	3 Star
Warranty:	5 years
Tap swivel spout:	360°
Cartridge:	Ceramic-Disc Cartridge
Assembled:	New Zealand
Material:	Brass

WELS rating



Included accessories



Basketwaste &  
Rect. Overflow Kit,  
15 L/min Rating  
(HCO)

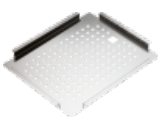


Basket Waste  
Strainer 15 L/min  
Rating, Suits 5901  
ZZ



HH Waste Cover  
Badge for Robiq  
Sinks (large)

Suggested accessories



Tray, SS  
Perforated, 365 x  
425 O.D



Drainer Tray, 395  
x 425mm



Basket, 320 x 380,  
Stainless Steel



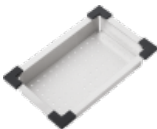
Chopping Board,  
351 x 410mm



Autosol 3in1 for  
Stainless Steel  
Cleaner 250ML



Spazio plumbing  
Kit Double



Colander,  
Stainless Steel



Hot Mat, Stainless  
Steel